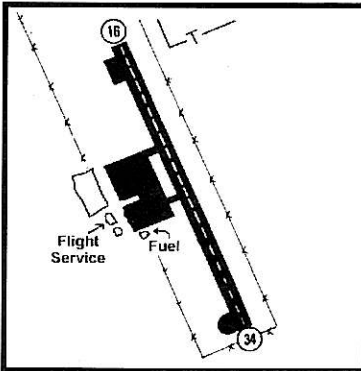
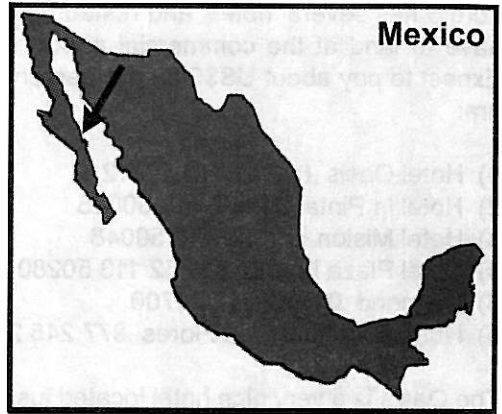


(International) Loreto

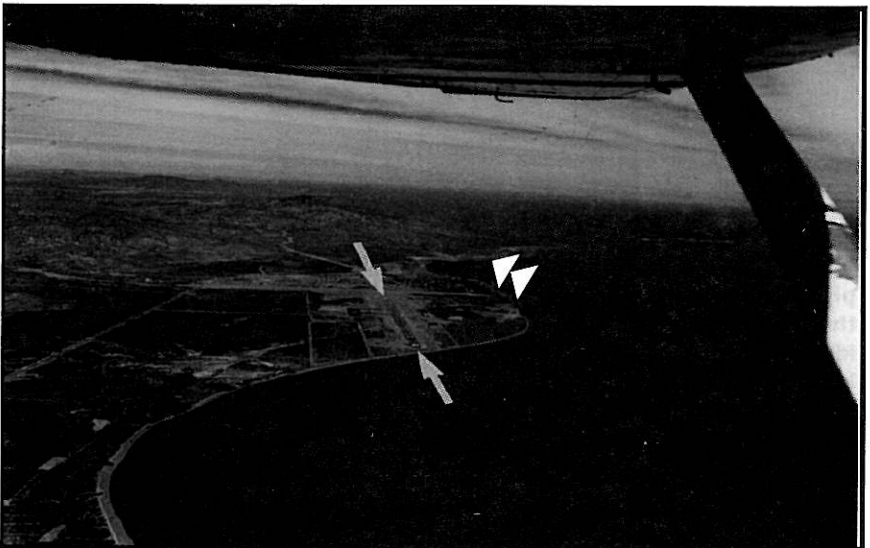
low-RETT-toe

Baja Sur, Mexico

TownIdent: (M) LTO
ICAO Ident: MMLT
Lat: N25 59
Long: W111 21
VOR: 113,2
Atis: N/A
Approach: N/A
Tower: 118.4
Ground: N/A
Common: 122.8
Elevation: 10
Type: Paved
Length: 7,218
Fuel: 100/Jet
Telephone: 113-5-04-98



Loreto is an airport of entry. Call 25 miles out prior to landing. If you are coming from the north and are low, there is a good chance you will not be able to talk until you all but see the airport. This is not a problem.



Loreto

Loreto has several hotels and restaurants. The only problem is that you have to land at the commercial airport and then take a taxi into town. Expect to pay about US\$5.00 per person one way. Once in town, hotels are:

- 1) Hotel Oasis 011 52 113 50112
- 2) Hotel la Pinta 011 52 113 50025
- 3) Hotel Mision 011 52 113 50048
- 4) Hotel Plaza Loreto 011 52 113 50280
- 5) Diamond 011 52 113 30700
- 6) Hotel Posada de las Flores 877 245 2860 (toll free)

The Oasis is a very nice hotel located just south of the main area of town. Lots of beach and is more of a resort. The la Pinta is much of the same at the north end of town. The Hotel Mision is a hotel that is on Playa Street (overlooking the bay). However, there is no beach. This is a favorite with the fishing crowd. Be sure to check out the bar on the second floor). The Hotel Posada de las Flores is a brand new hotel located in town and is a must to see.

Now, if you want to really step out of the box, try the Diamond. (used to be the Loreto Inn or the Presidente or....) This 250-room hotel is located south of the airport and is close to the golf course. It has several tennis courts, two swimming pools, a disco, a bar, and two restaurants. They do not allow any children and both the hot tub and the beach are known to be a little risqué. (clothing is optional)

