

*ATIS
127.6

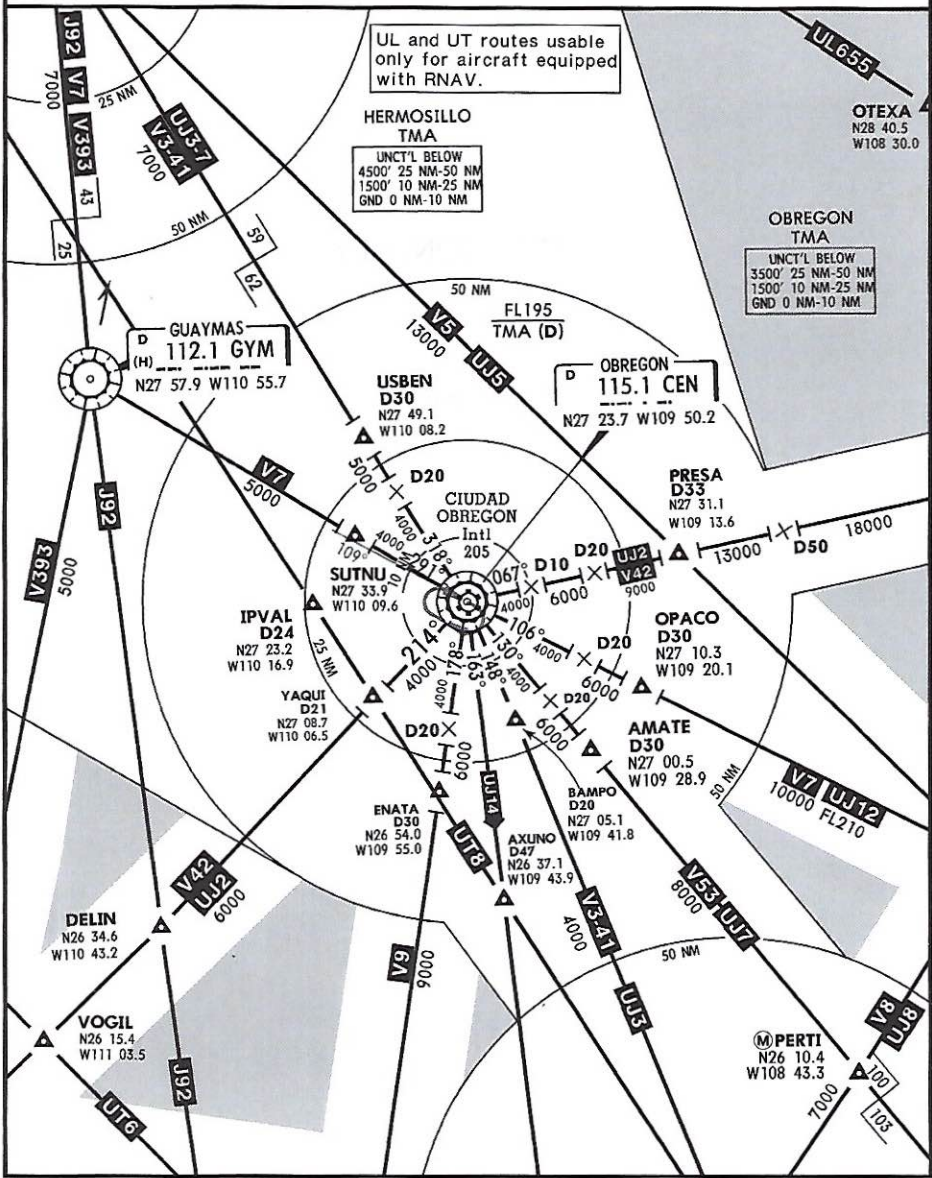
*OBREGON Approach
118.3

SPEED RESTRICTIONS WITHIN MEXICO AIRSPACE

Maximum IAS unless otherwise depicted or authorized by ATC

- At or below 3000' AGL within 10NM of any airport.....200 KTS
 - At or below 10000' MSL within Mexico airspace.....250 KTS
 - At or below 10000' AGL within 30NM of any airport.....250 KTS
- WITHIN HERMOSILLO TMA**
- At or below 3600' MSL of Gen Ignacio Pesqueira Garcia Intl Apt and within 10NM of HMO VORDME.....200 KTS
 - At or below 10600' MSL within 30NM of HMO VORDME.....250 KTS
- WITHIN OBREGON TMA**
- At or below 3200' MSL of Obregon Intl Apt and within 10NM of CEN VOR.....200 KTS
 - At or below 10200' MSL within 30NM of CEN VOR.....250 KTS

85-921

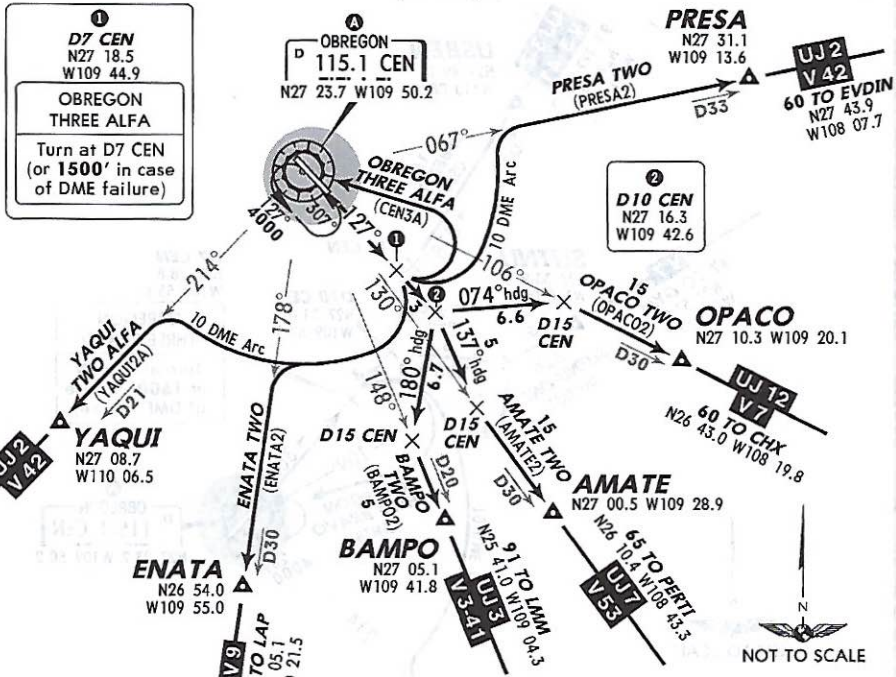


Changes: ATS system.

© JEPPESEN 2007, 2015 ALL RIGHTS RESERVED

Apt Elev 205' Trans level: FL195 Trans alt: 18500'

AMATE TWO (AMATE2) [AMATE2], BAMPO TWO (BAMPO2) [BAMPO2],
 ENATA TWO (ENATA2) [ENATA2], OBREGON THREE ALFA (CEN3A) [CEN3A],
 OPACO TWO (OPACO2) [OPACO2], PRESA TWO (PRESA2) [PRESA2],
 YAQUI TWO ALFA (YAQUI2A) [YAQUI2A] DEPARTURES
 (RWY 13)



These SIDs require a minimum climb gradient:
 OPACO TWO and PRESA TWO:
 240' per NM to 5000'.

Gnd speed-KT	75	100	150	200	250	300
240' per NM	300	400	600	800	1000	1200

MINIMUM CROSSING ALTITUDE			
DEL	V-42	UJ-2	5000
CHX	V-7	UJ-12	4100
CUL	V-53	UJ-7	3000
LMM	V-3-41	UJ-3	3000
LAP	V-9		3000
LTO	V-42	UJ-2	2100
HMO	V-3-41	UJ-3-7	4000
GYM	V-7		4000

SID	INITIAL CLIMB
AMATE TWO	Climb on CEN R-127 to D10 CEN, turn RIGHT and proceed on heading 137° to intercept CEN R-130 to AMATE. Continue on the assigned route or in accordance with ATC instructions.
BAMPO TWO	Climb on CEN R-127 to D10 CEN, turn RIGHT and proceed on heading 180° to intercept CEN R-148 to BAMPO. Continue on the assigned route or in accordance with ATC instructions.
ENATA TWO YAQUI TWO ALFA	Climb on CEN R-127 to D7 CEN, turn RIGHT and proceed on CEN 10 DME Arc to intercept the corresponding radial from CEN to ENATA or YAQUI. Continue on the assigned route or in accordance with ATC instructions.
OBREGON THREE ALFA	Climb on CEN R-127 to D7 CEN (or 1500' in case of DME failure). Then teardrop turn to the LEFT within 10 NM to CEN VOR. Depart CEN VOR at the MCA for the assigned route or in accordance with ATC instructions.
OPACO TWO	Climb on CEN R-127 to D10 CEN, turn LEFT and proceed on heading 074° to intercept CEN R-106 to OPACO. Continue on the assigned route or in accordance with ATC instructions.
PRESA TWO	Climb on CEN R-127 to D7 CEN, turn LEFT and proceed on CEN 10 DME Arc to intercept CEN R-067 to PRESA. Continue on the assigned route or in accordance with ATC instructions.

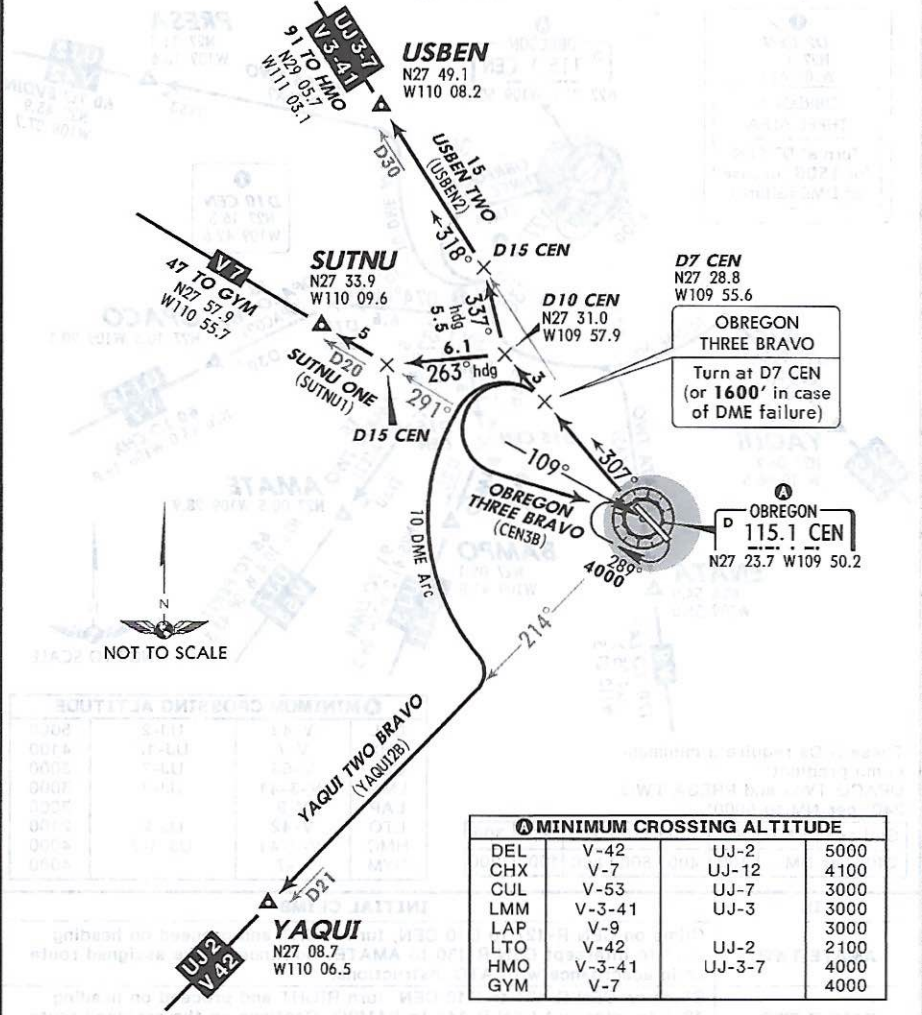
CHANGES: Airways.

© JEPPESEN, 2005, 2014. ALL RIGHTS RESERVED.

85-923

Apt Elev 205' Trans level: FL195 Trans alt: 18500'

OBREGON THREE BRAVO (CEN3B) [CEN3B], SUTNU ONE (SUTNU1) [SUTNU1],
 USBEN TWO (USBEN2) [USBEN2], YAQUI TWO BRAVO (YAQUI2B) [YAQU2B]
 DEPARTURES
 (RWY 31)



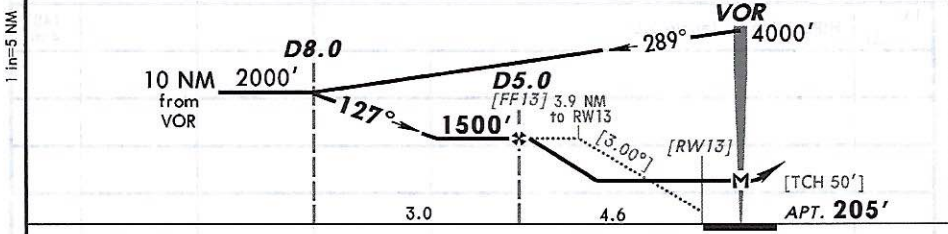
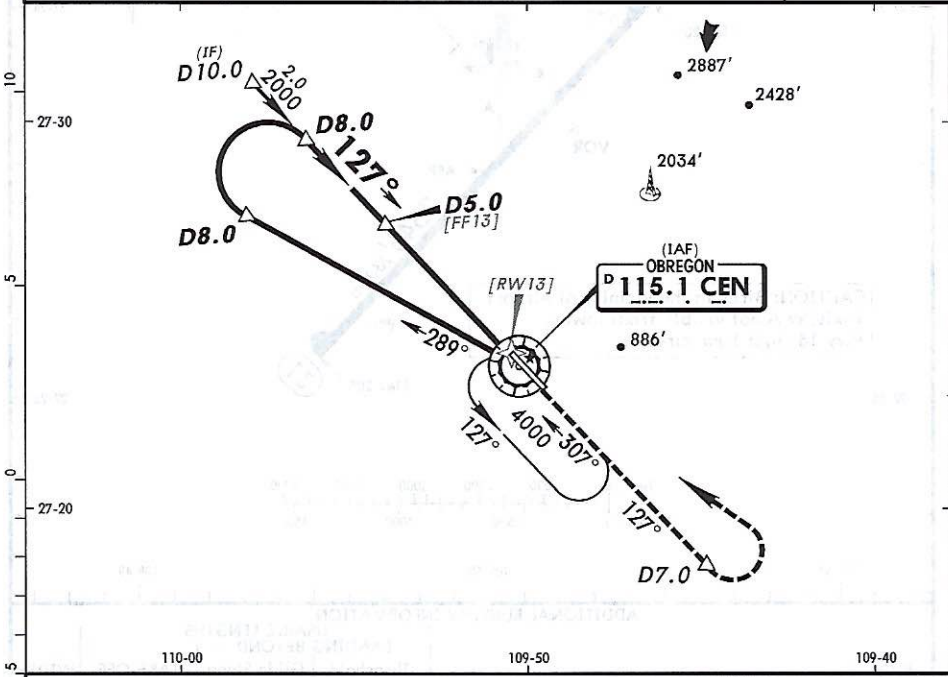
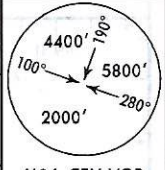
MINIMUM CROSSING ALTITUDE

DEL	V-42	UJ-2	5000
CHX	V-7	UJ-12	4100
CUL	V-53	UJ-7	3000
LMM	V-3-41	UJ-3	3000
LAP	V-9		3000
LTO	V-42	UJ-2	2100
HMO	V-3-41	UJ-3-7	4000
GYM	V-7		4000

SID	INITIAL CLIMB
OBREGON THREE BRAVO	Climb on CEN R-307 to D7 CEN (or 1600' in case of DME failure). Then teardrop turn to the LEFT within 10 NM to CEN VOR. Depart CEN VOR at the MCA ^A for the assigned route or in accordance with ATC instructions.
SUTNU ONE	Climb on CEN R-307 to D10 CEN, turn LEFT and proceed on heading 263° to intercept CEN R-291 to SUTNU. Continue on the assigned route or in accordance with ATC instructions.
USBEN TWO	Climb on CEN R-307 to D10 CEN, turn RIGHT and proceed on heading 337° to intercept CEN R-318 to USBEN. Continue on the assigned route or in accordance with ATC instructions.
YAQUI TWO BRAVO	Climb on CEN R-307 to D7 CEN, turn LEFT and proceed on CEN 10 DME Arc to intercept CEN R-214 to YAQUI. Continue on the assigned route or in accordance with ATC instructions.

CHANGES: SID added, airways. © JEPPESEN, 2005, 2014. ALL RIGHTS RESERVED.

*ATIS 127.6			*OBREGON Tower (APP) 118.3		
VOR CEN 115.1	Final Apch Crs 127°	Minimum Alt D5.0 1500' (1295')	MDA(H) 620' (415')	Apt Elev 205'	
MISSED APCH: Climb outbound on CEN VOR R-127 to D7.0, make LEFT teardrop turn within 10 NM to CEN VOR to the minimum holding altitude.					
Alt Set: MB (IN on req)		Apt Elev: 7 MB	Trans level: FL 195	Trans alt: 18500'	MSA CEN VOR



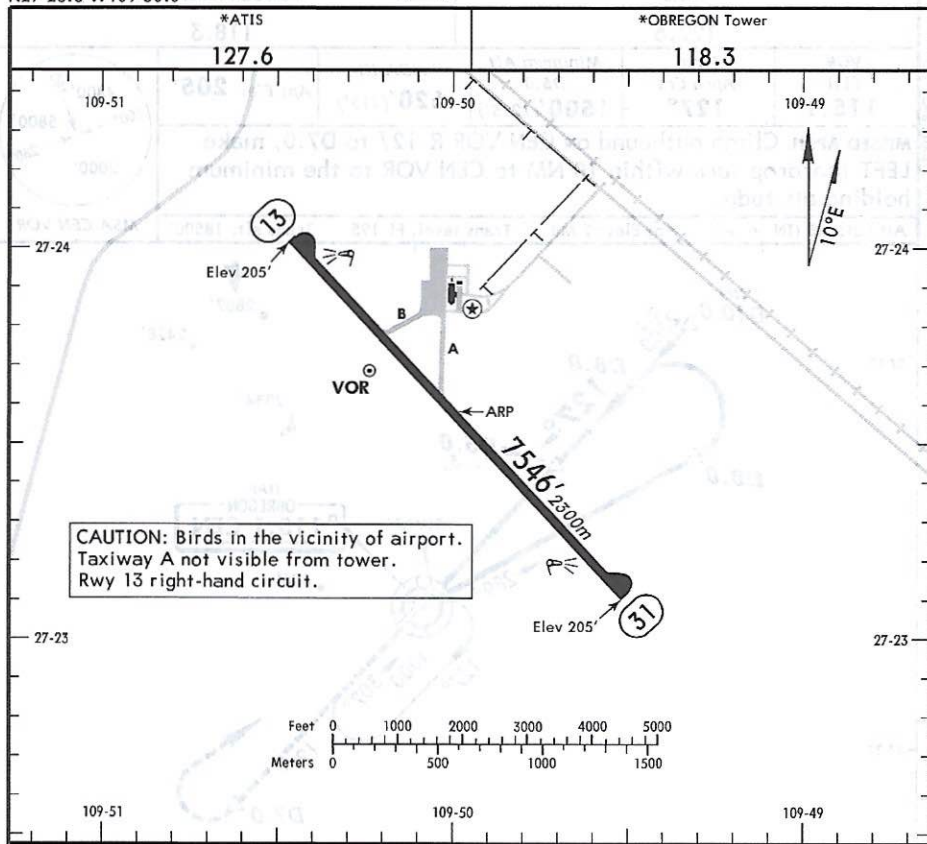
Gnd speed-Kts	70	90	100	120	140	160	PAPI-L	CEN on 115.1 R-127	D7.0
Descent angle [3.00°]	372	478	531	637	743	849			
MAP at VOR									

STRAIGHT-IN LANDING RWY 13			CIRCLE-TO-LAND		
MDA(H) 620' (415')			MDA(H)		
A			Max Kts	90	760' (555') -1
B	1		120		
C			140		1200' (995') -3
D	1/4		165		

MMCN/CEN
 Apt Elev 205'
 N27 23.6 W109 50.0

JEPPESEN
 21 NOV 14 (13-1)

CIUDAD OBREGON, MEXICO
 CIUDAD OBREGON INTL



ADDITIONAL RUNWAY INFORMATION

RWY	USABLE LENGTHS LANDING BEYOND	TAKE-OFF	WIDTH
13 31	HIRL PAPI-L (angle 3.0°)		148' 45m

TAKE-OFF	FOR FILING AS ALTERNATE
All Rwys	
1 & 2 Eng	800-2
3 & 4 Eng	
300-1/2	

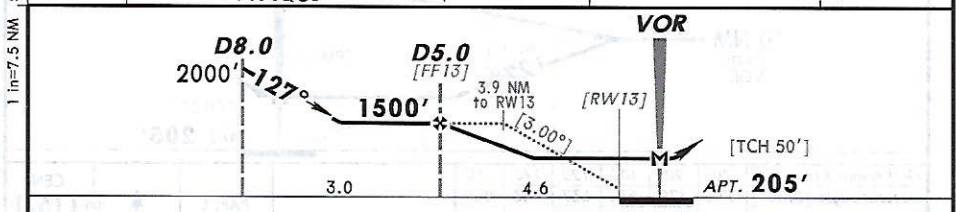
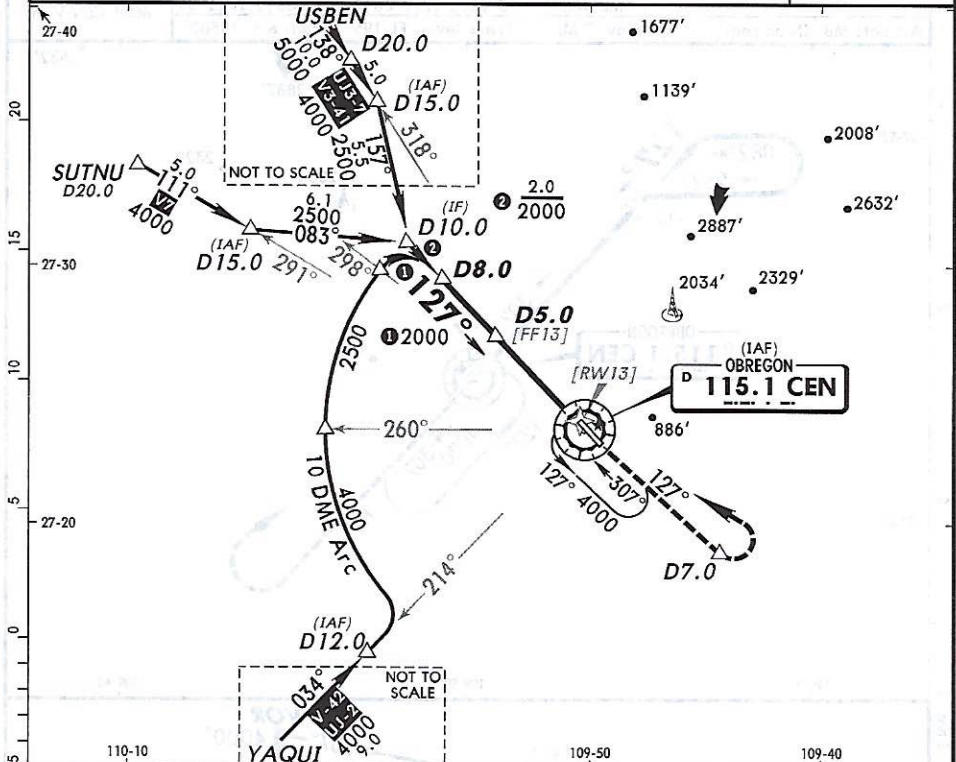
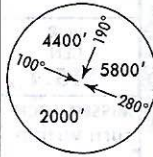
For departure procedures and MCA's see Ciudad Obregon Departures 10-3 and 10-3A.

CHANGES: Enhanced accuracy.

© JEPPESEN, 2002, 2014. ALL RIGHTS RESERVED.

MMCN/CEN CIUDAD OBREGON INTL 10 OCT 14 (13-2) Eff 16 Oct VOR DME 2 Rwy 13

*ATIS 127.6			*OBREGON Tower (APP) 118.3		
VOR CEN 115.1	Final Apch Crs 127°	Minimum Alt D5.0 1500' (1295')	MDA(H) 620' (415')	Apt Elev 205'	
<p>MISSED APCH: Climb outbound on CEN VOR R-127 to D7.0, make LEFT teardrop turn within 10 NM to CEN VOR to the minimum holding altitude.</p> <p>Alt Set: MB (IN on req) Apt Elev: 7 MB Trans level: FL 195 Trans alt: 18500' 1. In case of DME failure at any point during the procedure, maintain last altitude and proceed to the station in accordance with ATC instructions.</p>					
					MSA CEN VOR



Gnd speed-Kts	70	90	100	120	140	160				
Descent angle [3.00°]	372	478	531	637	743	849				
MAP at VOR										
STRAIGHT-IN LANDING RWY 13					CIRCLE-TO-LAND					
MDA(H) 620' (415')					MDA(H)					
A	1					760' (555') - 1				
B										
C	1 1/4					1200' (995') - 3				
D										

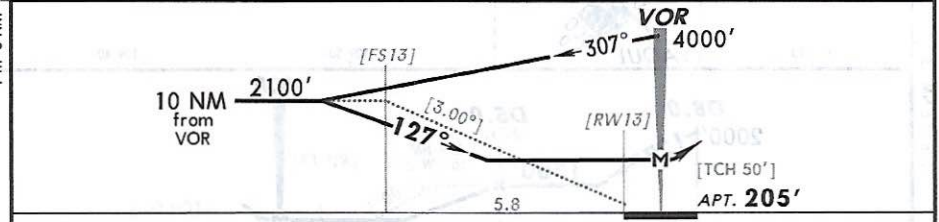
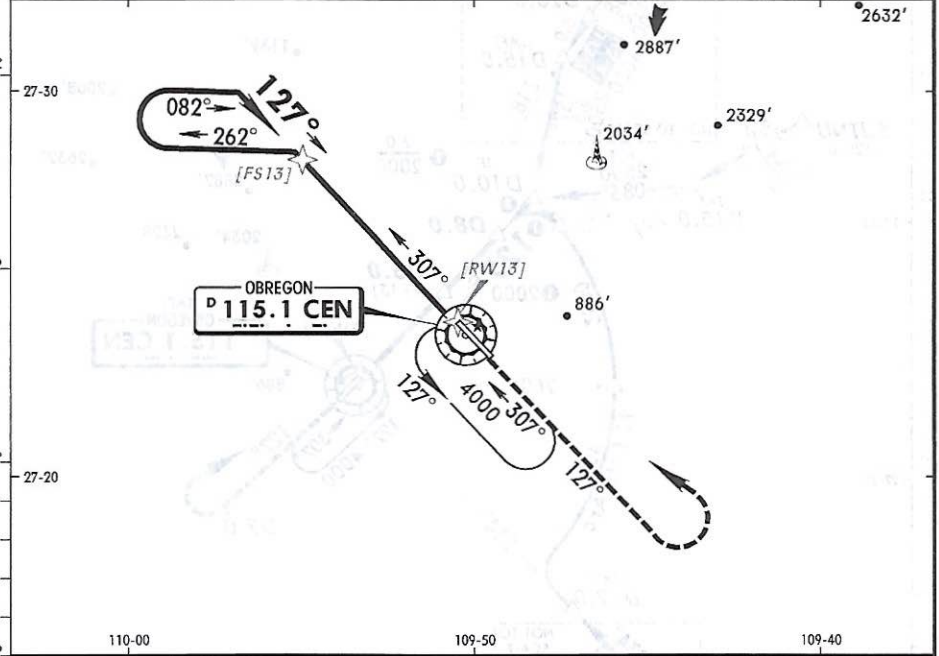
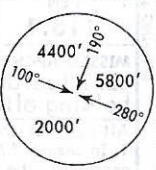
CHANGES: Transitions.

© JEPPESEN, 2005, 2014. ALL RIGHTS RESERVED.

94-927

MMCN/CEN CIUDAD OBREGON INTL 10 OCT 14 (13-3) Eff 16 Oct JEPPESEN CIUDAD OBREGON, MEXICO VOR Rwy 13

*ATIS			*OBREGON Tower (APP)				
127.6			118.3				
VOR CEN 115.1	Final Apch Crs 127°	No FAF	MDA(H) 820' (615')	Apt Elev 205'			
MISSED APCH: Climb outbound on CEN VOR R-127, make LEFT teardrop turn within 10 NM to CEN VOR to the minimum holding altitude.							
MAX TIME TO TURN							
Gnd Speed-Kts	80	100	120	140	160	180	200
7 NM to turn	5:15	4:12	3:30	3:00	2:38	2:20	2:06
Alt Set: MB (IN on req)						Apt Elev: 7 MB	
Trans level: FL 195						Trans alt: 18500'	

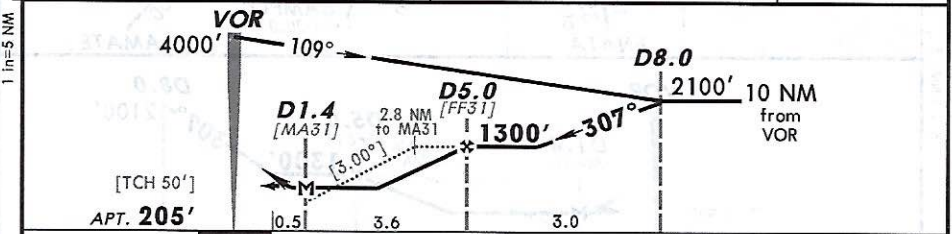
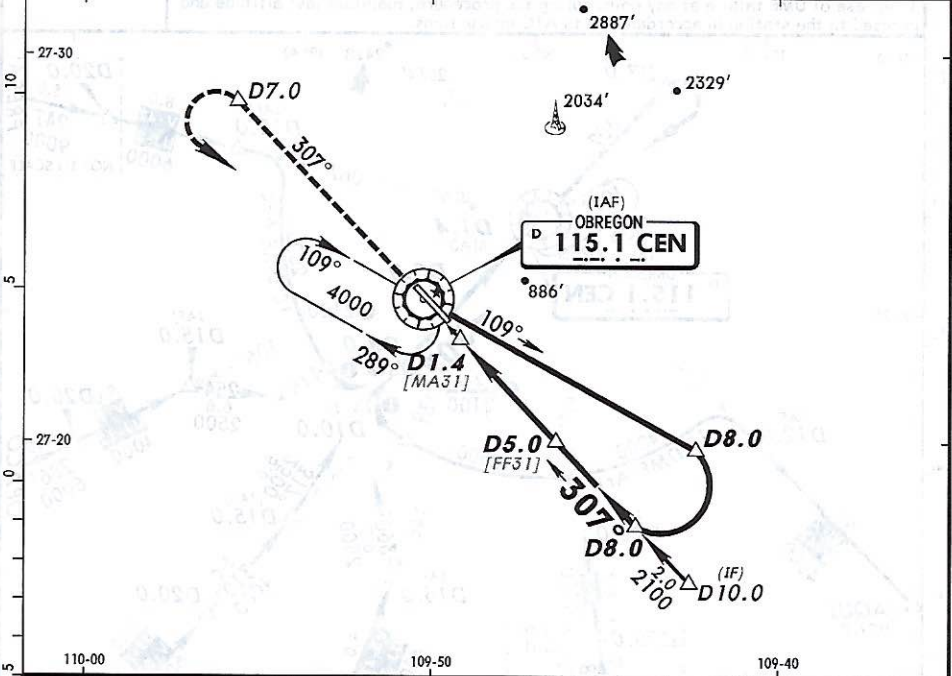
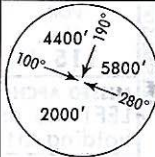


Gnd speed-Kts	70	90	100	120	140	160	PAPI-L	CEN on 115.1 R-127
Descent angle [3.00°]	372	478	531	637	743	849		
MAP at VOR								

STRAIGHT-IN LANDING RWY 13			CIRCLE-TO-LAND		
MDA(H) 820' (615')			MDA(H) _____		
A		Max Kts 90	820' (615') -1		
B	1	120			
C	1 3/4	140	1200' (995') -3		
D	2	165			

MMCN/CEN **JEPPESSEN CIUDAD OBREGON, MEXICO**
 CIUDAD OBREGON INTL 10 OCT 14 (13-4) Eff 16 Oct VOR DME 1 Rwy 31

*ATIS 127.6			*OBREGON Tower (APP) 118.3		
VOR CEN 115.1	Final Apch Crs 307°	Minimum Alt D5.0 1300' (1095')	MDA(H) 620' (415')	Apt Elev 205'	
MISSED APCH: Climb outbound on CEN VOR R-307 to D7.0, make LEFT teardrop turn within 10 NM to CEN VOR to the minimum holding altitude.					
Alt Set: MB (IN on req)		Apt Elev: 7 MB	Trans level: FL 195	Trans alt: 18500'	MSA CEN VOR



Gnd speed-Kts	70	90	100	120	140	160			
Descent angle [3.00°]	372	478	531	637	743	849			
MAP at D1.4									

PAPI-L ↑ on **115.1** **D7.0**
R-307

STRAIGHT-IN LANDING RWY 31			CIRCLE-TO-LAND		
MDA(H) 620' (415')			MDA(H)		
A	1		Max Kts. 90	760' (555') -1	
B	1 1/4		120		
C			140	1200' (995') -3	
D			165		

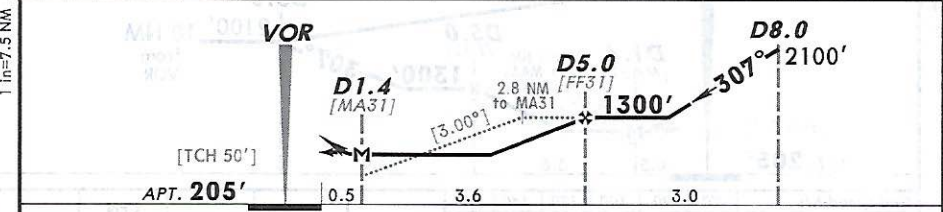
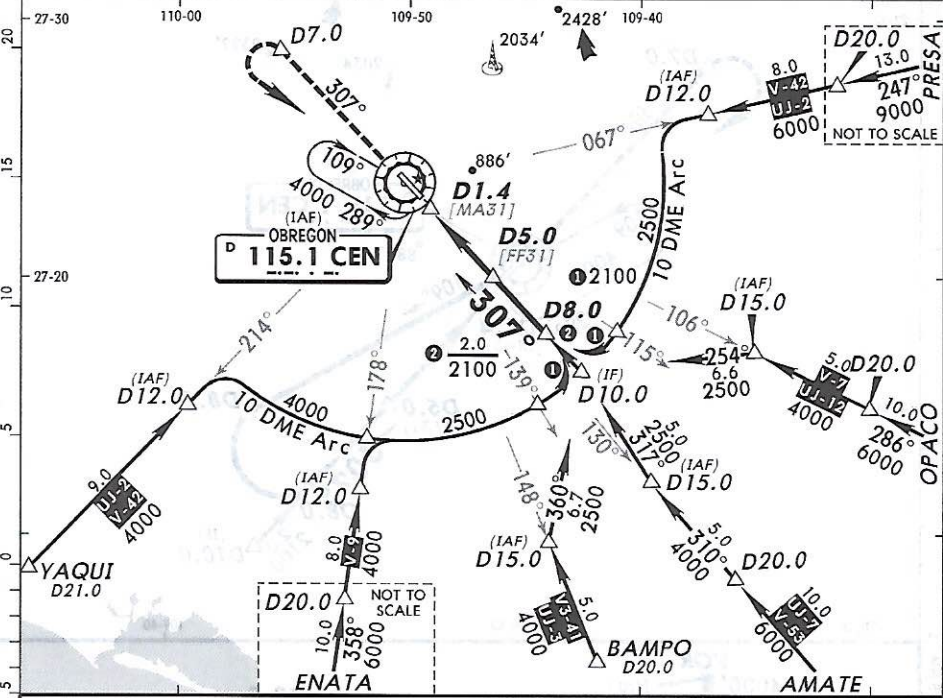
CHANGES: None.

© JEPPESSEN, 2002, 2011. ALL RIGHTS RESERVED.

84-929

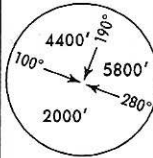
MMCN/CEN CIUDAD OBREGON INTL 10 OCT 14 (13-5) Eff 16 Oct VOR DME 2 Rwy 31

*ATIS 127.6			*OBREGON Tower (APP) 118.3	
VOR CEN 115.1	Final Apch Crs 307°	Minimum Alt D5.0 1300' (1095')	MDA(H) 620' (415')	Apt Elev 205'
<p>MISSED APCH: Climb outbound on CEN VOR R-307 to D7.0, make LEFT teardrop turn within 10 NM to CEN VOR to the minimum holding altitude.</p> <p>Alt Set: MB (IN on req) Apt Elev: 7 MB Trans level: FL 195 Trans alt: 18500'</p> <p>1. In case of DME failure at any point during the procedure, maintain last altitude and proceed to the station in accordance with ATC instructions.</p>				<p>MSA CEN VOR</p>

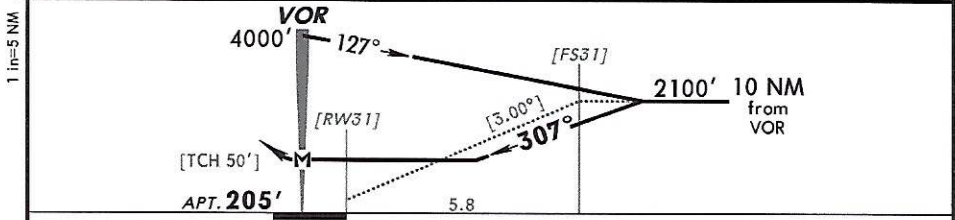
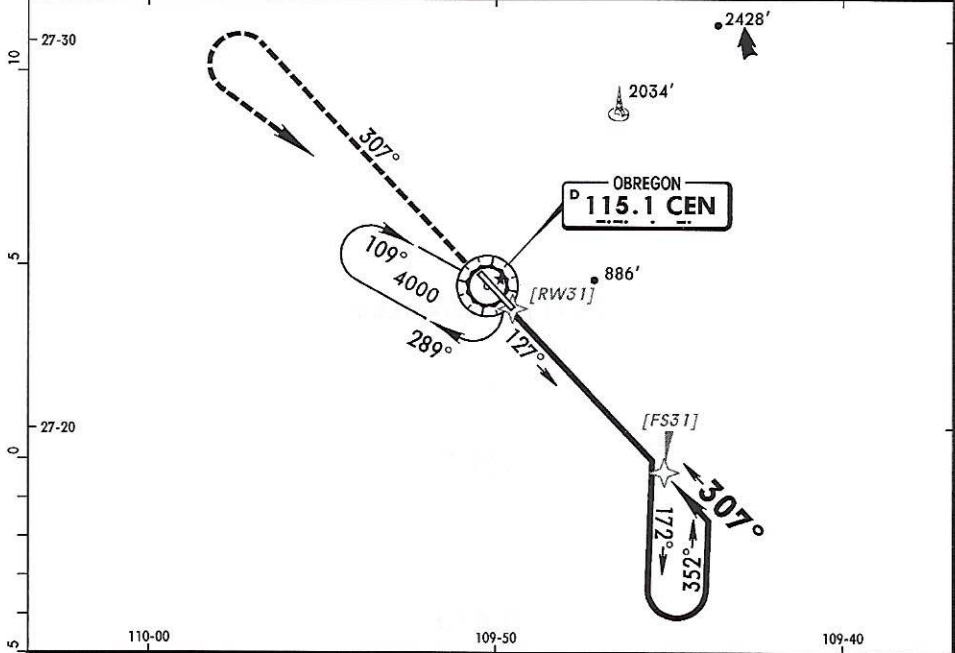


Gnd speed-Kts	70	90	100	120	140	160	PAPI-L	CEN on 115.1 R-307	D7.0	
Descent angle [3.00°]	372	478	531	637	743	849				
MAP at D1.4										
STRAIGHT-IN LANDING RWY 31				CIRCLE-TO-LAND						
MDA(H) 620' (415')				MDA(H)						
A	1				Max Kts	90				760' (555') -1
B					120					
C	1 1/4				140					1200' (995') -3
D					165					

*ATIS 127.6			*OBREGON Tower (APP) 118.3					
VOR CEN 115.1	Final Apch Crs 307°	No FAF	MDA(H) 960' (755')	Apt Elev 205'				
MISSED APCH: Climb outbound on CEN VOR R-307, make LEFT teardrop turn within 10 NM to CEN VOR to the minimum holding altitude.								
MAX TIME TO TURN								
Gnd Speed-Kts		80	100	120	140	160	180	200
7 NM to turn		5:15	4:12	3:30	3:00	2:38	2:20	2:06
Alt Set: MB (IN on req)		Apt Elev: 7 MB		Trans level: FL 195		Trans alt: 18500'		



MSA CEN VOR



Gnd speed-Kts	70	90	100	120	140	160	PAPI-L	CEN on 115.1 R-307
Descent angle [3.00°]	372	478	531	637	743	849		
MAP at VOR								

STRAIGHT-IN LANDING RWY 31			CIRCLE-TO-LAND			
MDA(H) 960' (755')			Max Kts	MDA(H)		
A	1	90	960' (755') -1			
B	1 1/4	120	960' (755') -1 1/4			
C	2 1/4	140	1200' (995') -3			
D	2 1/2	165				

CHANGES: Procedure.

© JEPPESEN, 2002, 2011. ALL RIGHTS RESERVED.

84-931