

MEXICALI, MEXICO

Gen Rodolfo Sanchez Taboada Intl

*ATIS
127.6

*MEXICALI Approach
118.2

SPEED RESTRICTIONS WITHIN MEXICO AIRSPACE

Maximum IAS unless otherwise depicted or authorized by ATC

- At or below 3000' AGL within 10NM of any airport.....200 KTS
- At or below 10,000' MSL within Mexico Airspace.....250 KTS
- At or below 10,000' AGL within 30NM of any airport.....250 KTS

WITHIN MEXICALI TMA

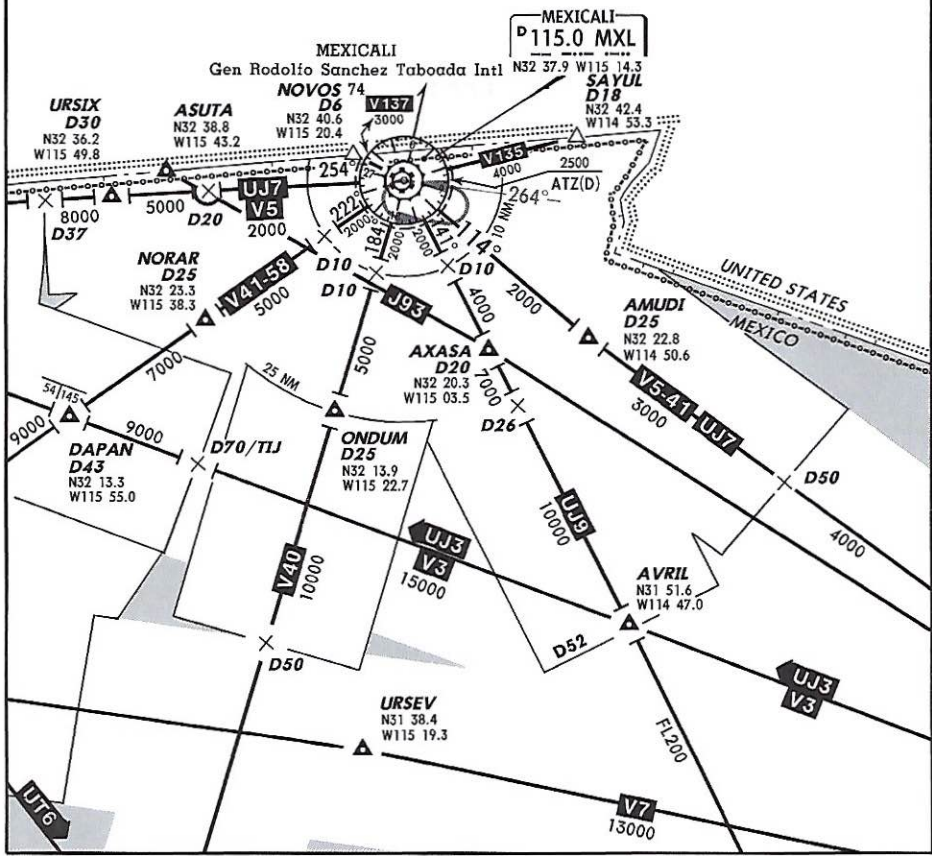
- At or below 3100' MSL of Gen Roldolfo Sanchez Taboada Intl Apt and within 10NM of MXL VORDME.....200 KTS
- At or below 10,100' MSL within 25NM of MXL VORDME.....250 KTS

WITHIN TIJUANA TMA

- At or below 3500' MSL of Gen Abelardo L Rodriguez Intl Apt and within 10NM of TIJ VORDME.....200 KTS
- At or below 10,500' MSL within 30NM of TIJ VORDME.....250 KTS

TIJUANA TMA (D)
 UNCT'L BELOW
 4500' 25 NM-50 NM
 2000' 10 NM-25 NM
 GND 0 NM-10 NM

MEXICALI TMA (D)
 UNCT'L BELOW
 1500' 10 NM-25 NM
 GND 0 NM-25 NM

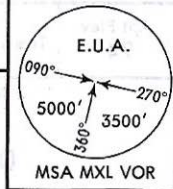


CHANGES: ATIS system.

© JEPPESEN, 2010, 2014. ALL RIGHTS RESERVED.

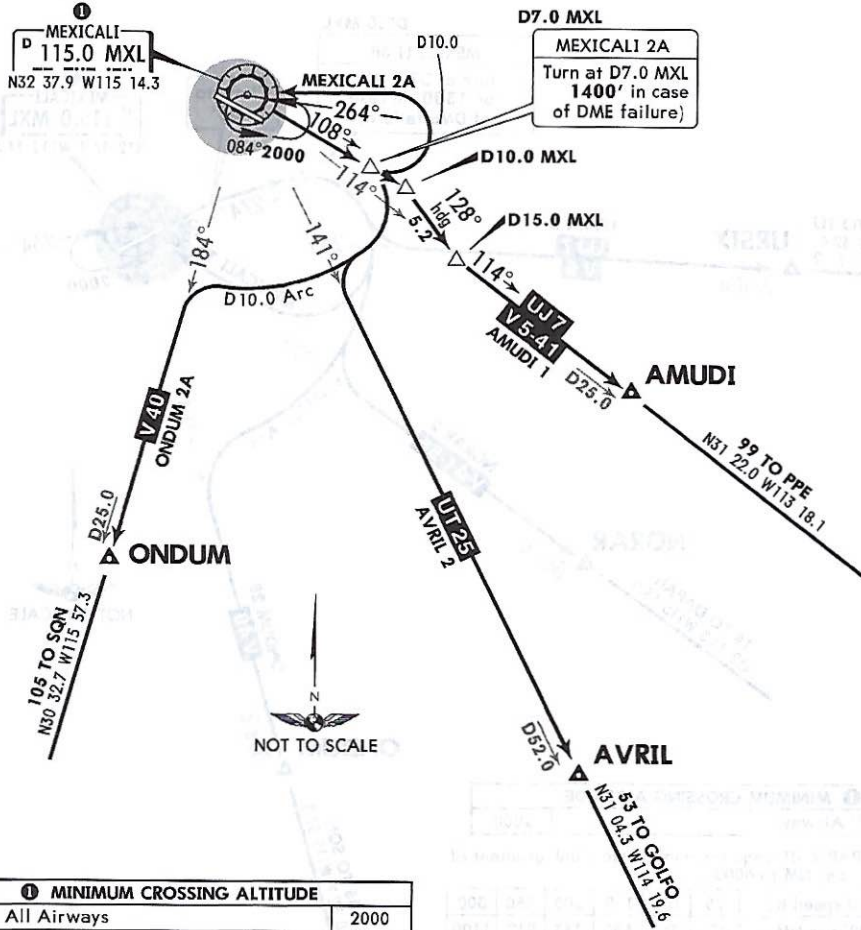
53-1177

Apt Elev 74' Trans level: FL195 Trans alt: 18500'



AMUDI 1 (AMUDI1) [AMUDI1]
 AVRIL 2 (AVRIL2) [AVRIL2]
 MEXICALI 2A (MXL2A) [MXL2A]
 ONDUM 2A (ONDUM2A) [ONU2A]
 DEPARTURES
 (RWY 10)

UNITED STATES
 MEXICO



① MINIMUM CROSSING ALTITUDE	2000
All Airways	

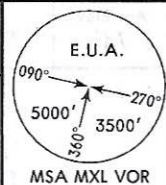
SID	INITIAL CLIMB
AMUDI 1	Climb via MXL R-108 until D10.0 MXL, turn RIGHT heading 128° to intercept MXL R-114 to AMUDI1, and continue on assigned route or according to ATC instructions.
AVRIL 2 ONDUM 2A	Climb via MXL R-108 until D7.0 MXL, turn RIGHT and proceed on D10.0 Arc to intercept the corresponding radial from MXL VOR to AVRIL or ONDUM and continue on assigned route or according to ATC instructions.
MEXICALI 2A	Climb via MXL R-108 until D7.0 MXL (or 1400' in case of DME failure), then turn LEFT within D10.0 to MXL VOR. Depart MXL VOR at the MCA ① for the assigned route or according to ATC instructions.

CHANGES: MSA added, AVRIL departure renumbered.

© JEPPESEN, 2005, 2016. ALL RIGHTS RESERVED.

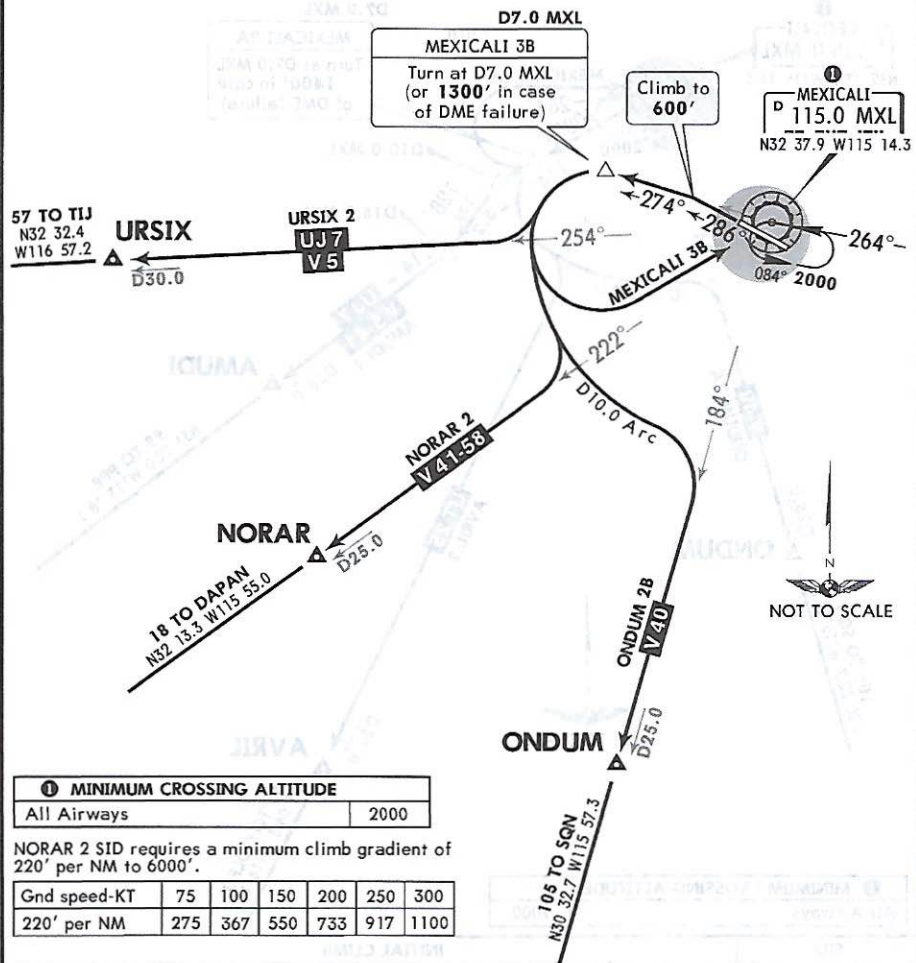
53-1179

Apt Elev 74'
 Trans level: FL195 Trans alt: 18500'



MEXICALI 3B (MXL3B) [MXL3B]
NORAR 2 (NORAR2) [NORAR2]
ONDUM 2B (ONDUM2B) [ONDUM2B]
URSIX 2 (URSIX2) [URSIX2]
 DEPARTURES
 (RWY 28)

UNITED STATES
 MEXICO



① MINIMUM CROSSING ALTITUDE	
All Airways	2000

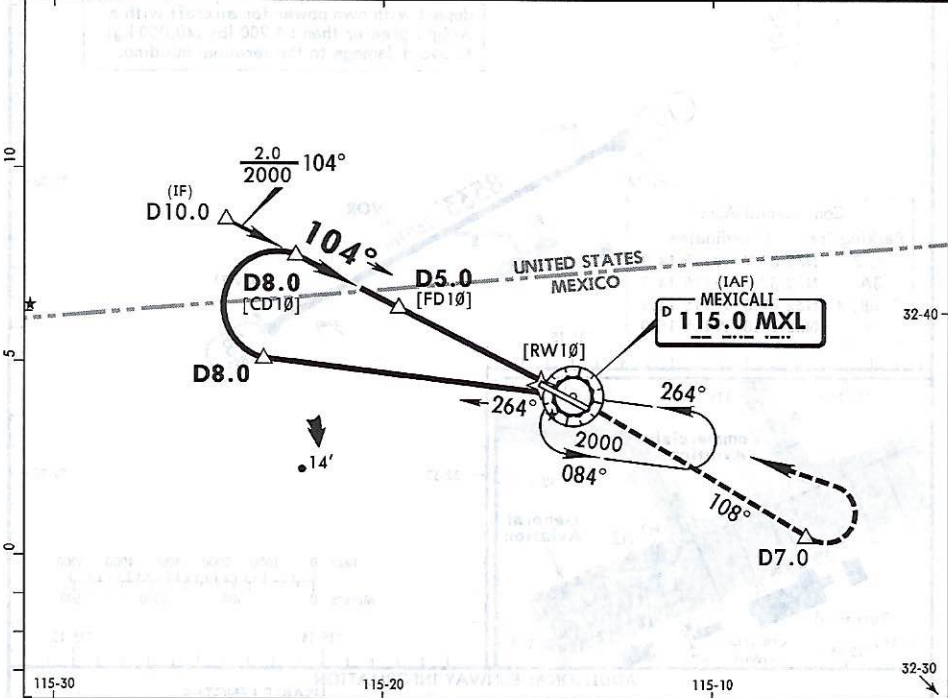
NORAR 2 SID requires a minimum climb gradient of 220' per NM to 6000'.

Gnd speed-KT	75	100	150	200	250	300
220' per NM	275	367	550	733	917	1100

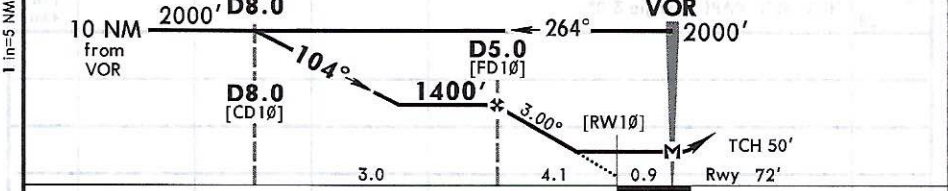
SID	INITIAL CLIMB
MEXICALI 3B	Climb via runway heading to 600', then turn LEFT and proceed on MXL R-274 to D7.0 MXL (or 1300' in case of DME failure), then turn LEFT within D10.0 to MXL VOR. Depart MXL VOR at the MCA ① for the assigned route or according to ATC instructions.
NORAR 2 ONDUM 2B URSIX 2	Climb via runway heading to 600', then turn LEFT and proceed via MXL R-274 to D7.0 MXL, turn LEFT on D10.0 Arc to intercept the corresponding radial from MXL VOR to NORAR, ONDUM, or URSIX. Continue on assigned route or according to ATC instructions.

MMML/MXL
GEN RODOLFO SANCHEZ TABOADA INTL **JEPPESEN MEXICALI, MEXICO**
 27 JAN 17 **(13-1) VOR DME-1 Rwy 10**
 Eff 2 Feb

*ATIS 127.6	*MEXICALI FIS 123.9	*MEXICALI Approach 118.2	MAZATLAN Center 128.3 when App inop.	*MEXICALI Tower 118.2
VOR MXL 115.0	Final Apch Crs 104°	Minimum Alt D5.0 1400' (1327')	MDA(H) 500' (428')	Apt Elev 74' Rwy 72'
MISSED APCH: Climb on MXL VOR R-108 to D7.0, then turn LEFT within 10 NM to MXL VOR to the minimum holding altitude.				No MSA Published MSA MXL VOR
Alt Set: MB (IN on req)		Apt Elev: 3 MB	Trans level: FL 195	Trans alt: 18500'



115-30	5.0	115-20	4.0	115-10	3.0
MXL DME	5.0		4.0		3.0
ALTITUDE	1400'		1090'		780'



Gnd speed-Kts	70	90	100	120	140	160	REIL PAPI-L	↑ on 115.0 R-108	MXL D7.0
Descent Angle 3.00°	372	478	531	637	743	849			
MAP at VOR or FAF to MAP	5.0	4:17	3:20	3:00	2:30	2:09	1:53		

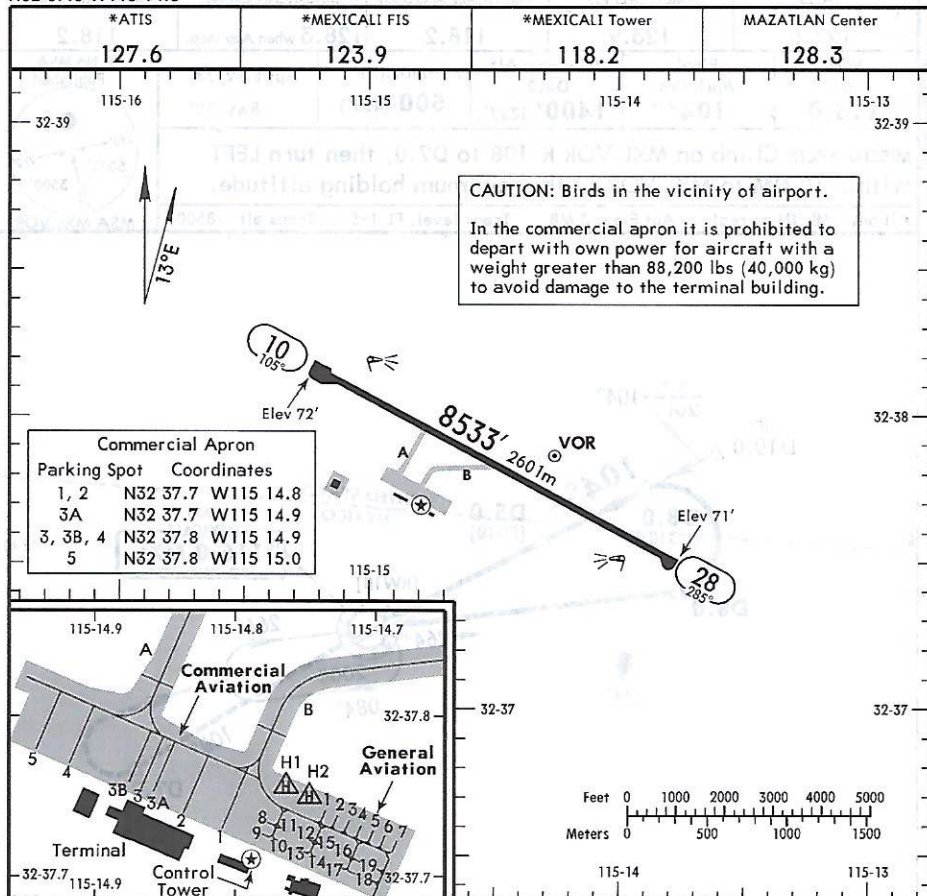
STRAIGHT-IN LANDING RWY 10 MDA(H) 500' (428')				CIRCLE-TO-LAND	
A			Max Kts 90	MDA(H)	
B	1		120	580' (506') - 1	
C	1/4		140	640' (566') - 1 1/2	
D	1/2		165	640' (566') - 2	

CHANGES: Rwy elev, timing, recommended altitude table. © JEPPESEN, 1999, 2017. ALL RIGHTS RESERVED.

MMML/MXL
 Apt Elev 74'
 N32 37.8 W115 14.5

JEPPESEN
 27 JAN 17
 Eff 2 Feb (13-1)

MEXICALI, MEXICO
 GEN RODOLFO SANCHEZ TABOADA INTL



RWY	REMARKS	USABLE LENGTHS		TAKE-OFF	WIDTH
		Threshold	Glide Slope		
10 28	HIRL REIL PAPI-L (angle 3.0°)				148' 45m

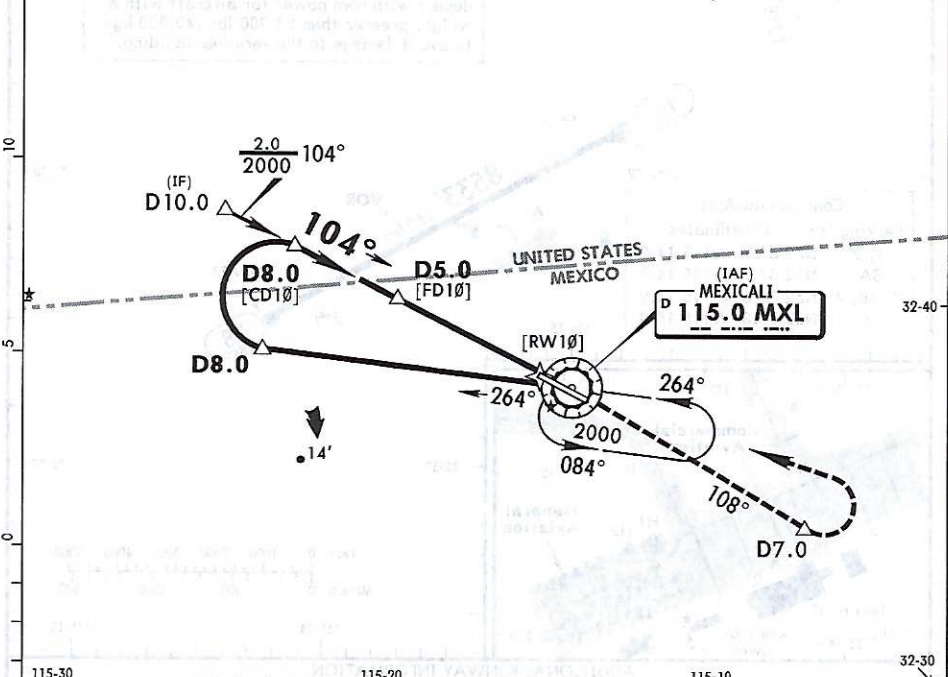
TAKE-OFF		FOR FILING AS ALTERNATE	
All Rwys		800-2	
1 & 2 Eng	600-2		
3 & 4 Eng	300-1		

CHANGES: Rwy 10 elevation. © JEPPESEN, 1998, 2017. ALL RIGHTS RESERVED.

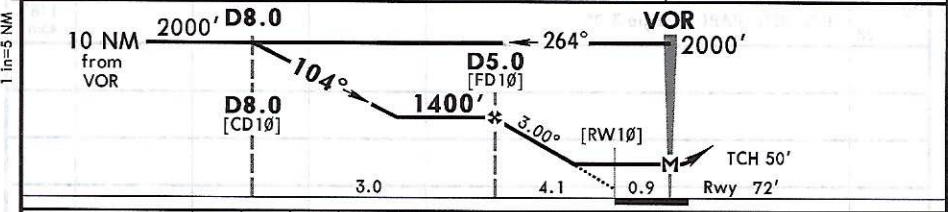
MMML/MXL
GEN RODOLFO SANCHEZ TABOADA INTL 27 JAN 17 **(13-1) VOR DME-1 Rwy 10**
 Eff 2 Feb



*ATIS 127.6	*MEXICALI FIS 123.9	*MEXICALI Approach 118.2	MAZATLAN Center 128.3 when App inop.	*MEXICALI Tower 118.2
VOR MXL 115.0	Final Apch Crs 104°	Minimum Alt D5.0 1400' (1327')	MDA(H) 500' (428')	Apt Elev 74' Rwy 72'
MISSED APCH: Climb on MXL VOR R-108 to D7.0, then turn LEFT within 10 NM to MXL VOR to the minimum holding altitude.				① No MSA Published
Alt Set: MB (IN on req) Apt Elev: 3 MB Trans level: FL 195 Trans alt: 18500'				MSA MXL VOR



MXL DME	5.0	4.0	3.0
ALTITUDE	1400'	1090'	780'



Gnd speed-Kts	70	90	100	120	140	160			
Descent Angle 3.00°	372	478	531	637	743	849			
MAP at VOR or FAF to MAP	5.0	4:17	3:20	3:00	2:30	2:09	1:53		

STRAIGHT-IN LANDING RWY 10				CIRCLE-TO-LAND			
MDA(H) 500' (428')				MDA(H)			
A	1			Max Kts	90		
B				120	580'(506') - 1		
C	1 1/4			140	640'(566') - 1 1/2		
D	1 1/2			165	640'(566') - 2		

CHANGES: Rwy elev, timing, recommended altitude table. © JEPPESEN, 1999, 2017. ALL RIGHTS RESERVED.

52-1181

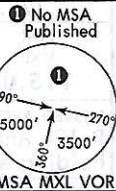
1 in = 5 NM

MMML/MXL

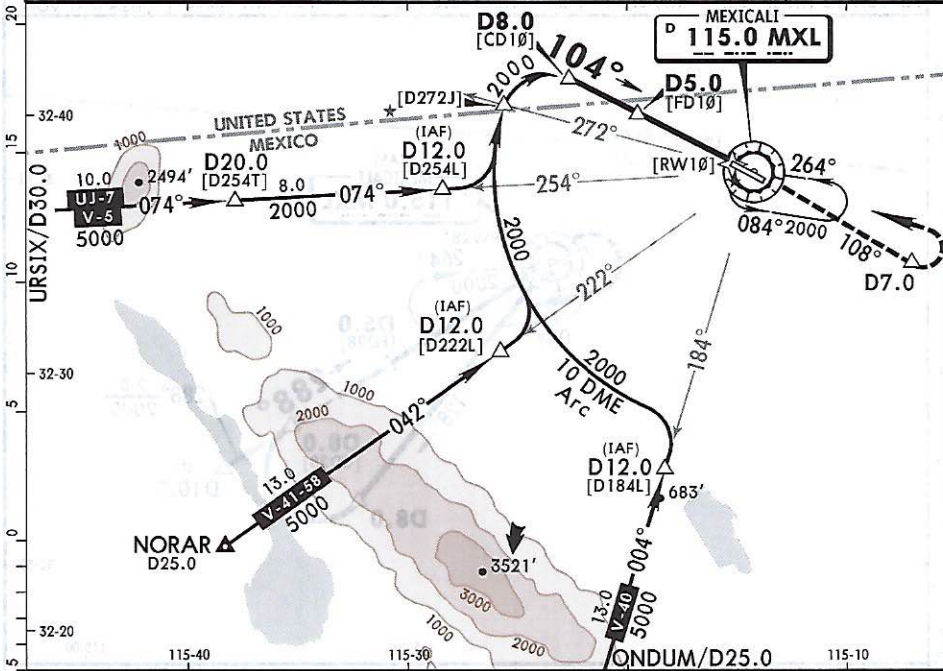
JEPPESEN MEXICALI, MEXICO
27 JAN 17
Eff 2 Feb (13-2) VOR DME-2 Rwy 10

GEN RODOLFO SANCHEZ TABOADA INTL

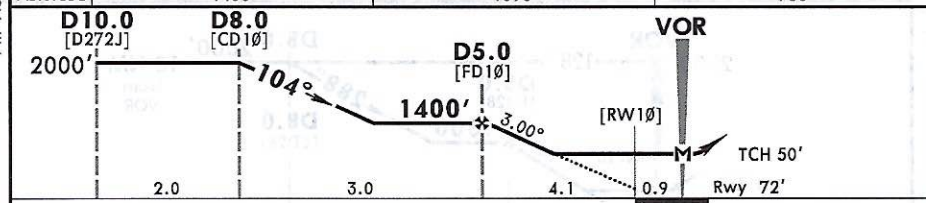
*ATIS 127.6	*MEXICALI FIS 123.9	*MEXICALI Approach 118.2	MAZATLAN Center 128.3 when App inop.	*MEXICALI Tower 118.2
VOR MXL 115.0	Final Apch Crs 104°	Minimum Alt D5.0 1400' (1327')	MDA(H) 500' (428')	Apt Elev 74' Rwy 72'



MISSED APCH: Climb on MXL VOR R-108 to D7.0, then turn LEFT within 10 NM to MXL VOR to the minimum holding altitude.
Alt Set: MB (IN on req) Rwy Elev: 3 MB Trans level: FL 195 Trans alt: 18500'
1. In case of DME failure at any point during the procedure, maintain last altitude and proceed to the station in accordance with ATC instructions.



MXL DME	5.0	4.0	3.0
ALTITUDE	1400'	1090'	780'



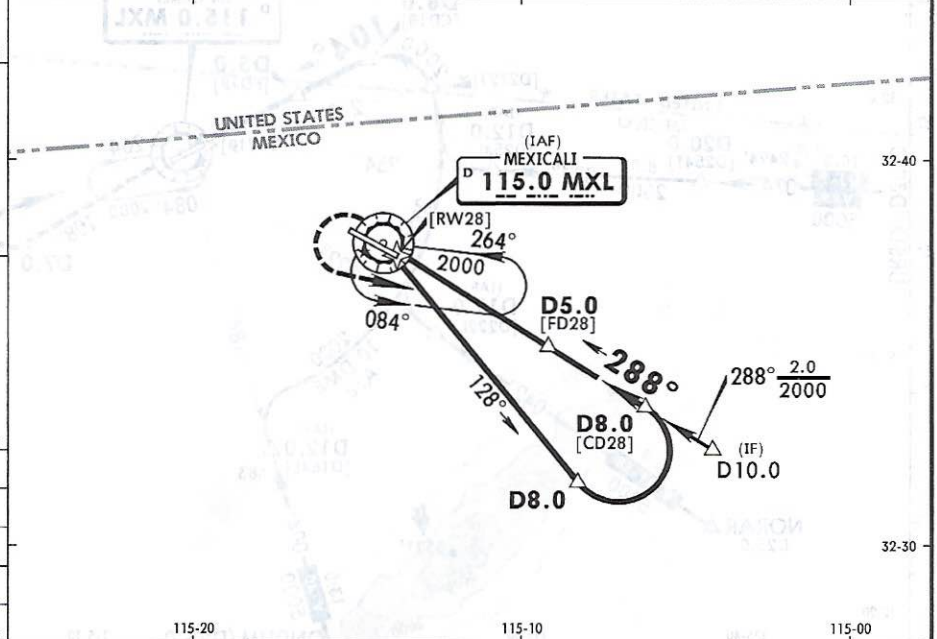
End speed-Kts	70	90	100	120	140	160	
Descent Angle 3.00°	372	478	531	637	743	849	
MAP at VOR or FAF to MAP	5.0	4:17	3:20	3:00	2:30	2:09	1:53

STRAIGHT-IN LANDING RWY 10			CIRCLE-TO-LAND		
MDA(H) 500' (428')			MDA(H) _____		
A	1		Max Kts	_____	
B	1 1/4		90	580' (506') - 1	
C	1 1/2		120	_____	
D	_____		140	640' (566') - 1 1/2	
	_____		165	640' (566') - 2	

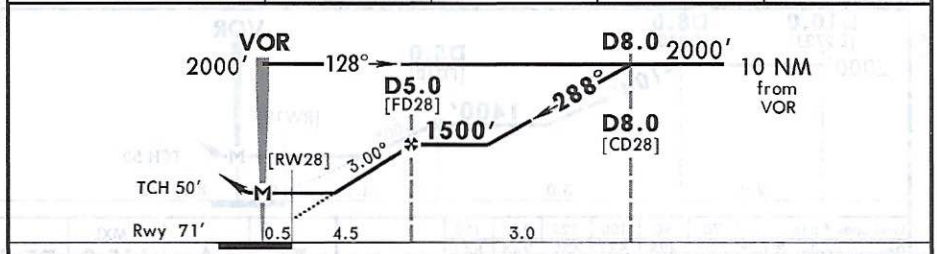
CHANGES: Rwy elev, timing, recommended altitude table, minimums. © JEPPESEN, 1999, 2017. ALL RIGHTS RESERVED.

MMML/MXL
GEN RODOLFO SANCHEZ TABOADA INTL **JEPPESEN MEXICALI, MEXICO**
 27 JAN 17 **13-3** **VOR DME 1 Rwy 28**
 Eff 2 Feb

*ATIS 127.6	*MEXICALI FIS 123.9	*MEXICALI Approach 118.2	MAZATLAN Center 128.3 when App inop.	*MEXICALI Tower 118.2
VOR MXL 115.0	Final Apch Crs 288°	Minimum Alt D5.0 1500' (1429')	MDA(H) 520' (449')	Apt Elev 74' Rwy 71'
MISSED APCH: Climbing LEFT turn to intercept outbound MXL VOR R-128 and proceed on the approach track to the minimum holding altitude.				① No MSA Published
Alt Set: MB (IN on req) Rwy Elev: 3 MB Trans level: FL 195 Trans alt: 18500'				MSA MXL VOR



115-20	115-10	115-00		
MXL DME	5.0	4.0	3.0	2.0
ALTITUDE	1500'	1190'	880'	570'

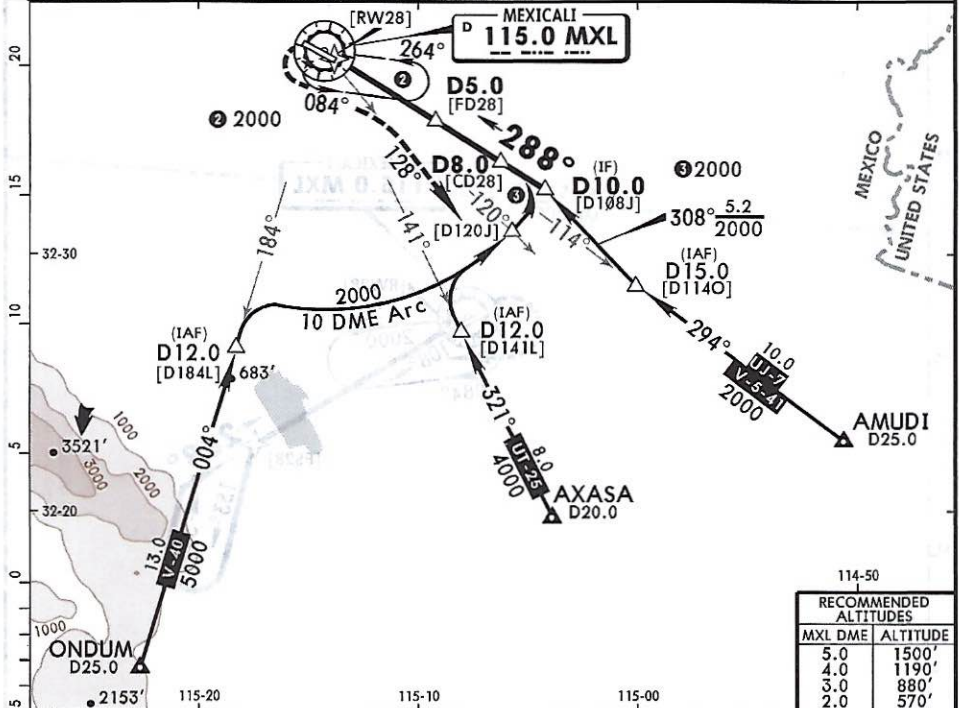


Grnd speed-Kts	70	90	100	120	140	160	REIL PAPI-L		MXL 115.0 R-128
Descent Angle 3.00°	372	478	531	637	743	849			
MAP at VOR or D5.0 to MAP	4:17	3:20	3:00	2:30	2:09	1:52			

STRAIGHT-IN LANDING RWY 28				CIRCLE-TO-LAND			
MDA(H) 520' (449')				Max Kts. MDA(H)			
A	1			90	580' (506') - 1		
C	1 1/4			140	640' (566') - 1 1/2		
D	1 1/2			165	640' (566') - 2		

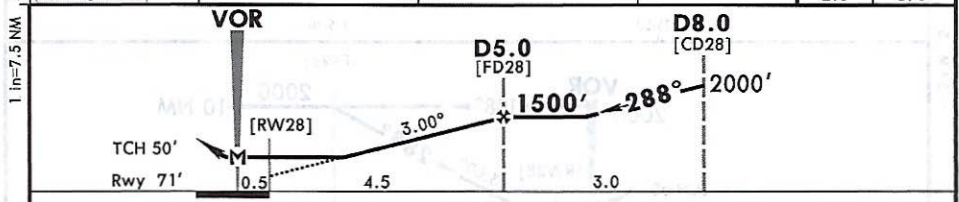
MMML/MXL
GEN RODOLFO SANCHEZ TABOADA INTL **JEPPESEN MEXICALI, MEXICO**
 2 DEC 16 **13-4** VOR DME 2 Rwy 28
 Eff 8 Dec

*ATIS 127.6	*MEXICALI FIS 123.9	*MEXICALI Approach 118.2	MAZATLAN Center 128.3 when App inop.	*MEXICALI Tower 118.2
VOR MXL 115.0	Final Apch Crs 288°	Minimum Alt D5.0 1500' (1429')	MDA(H) 520' (449')	Apt Elev 74' Rwy 71'
MISSED APCH: Climbing LEFT turn to intercept MXL VOR R-128 outbound and proceed on the VOR DME 1 Rwy 28 approach track to the minimum holding altitude.				① No MSA Published MSA MXL VOR
Alt Set: MB (IN on req) Rwy Elev: 3 MB Trans level: FL 195 Trans alt: 18500' 1. In case of DME failure at any point during the procedure, maintain last altitude and proceed to the station in accordance with ATC instructions.				



114-50

RECOMMENDED ALTITUDES	
MXL DME	ALTITUDE
5.0	1500'
4.0	1190'
3.0	880'
2.0	570'



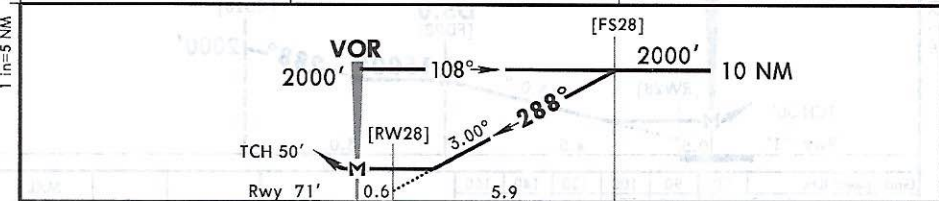
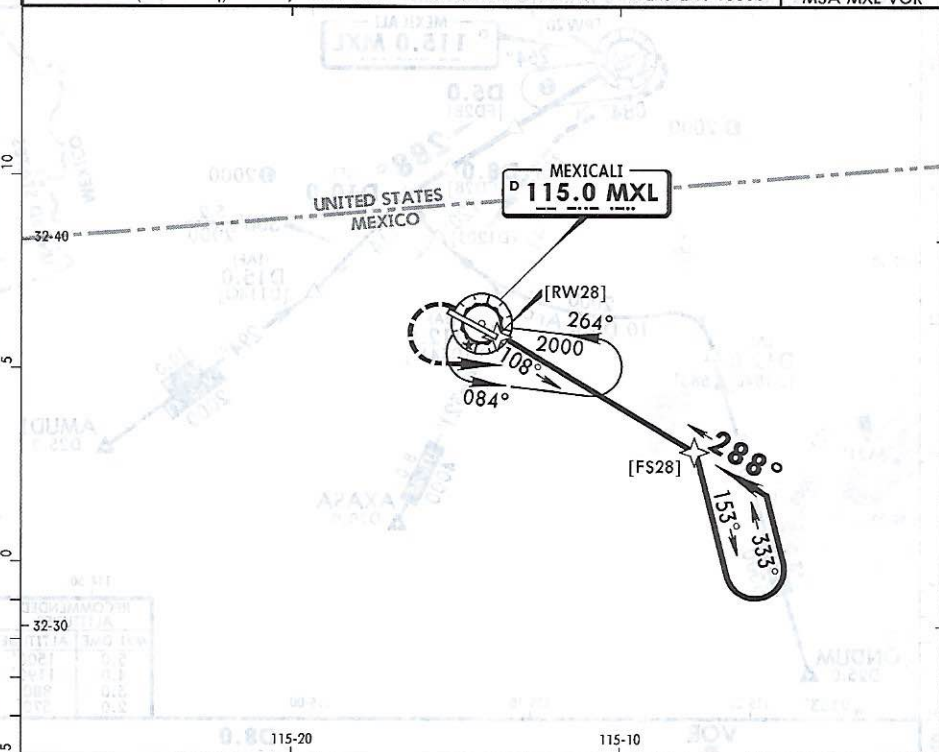
Gnd speed-Kts	70	90	100	120	140	160	REIL PAPI-L	MXL 115.0 R-128
Descent Angle 3.00°	372	478	531	637	743	849		
MAP at VOR or D5.0 to MAP	4:17	3:20	3:00	2:30	2:09	1:52		

STRAIGHT-IN LANDING RWY 28		CIRCLE-TO-LAND	
MDA(H) 520' (449')		MDA(H)	
A	B	Max Kts	
		90	580'(506') - 1
		120	
C	1¼	140	640'(566') - 1½
D	1½	165	640'(566') - 2

CHANGES: Recommended altitudes, profile, FAF time to MAP, transition. © JEPPESEN, 1999, 2016. ALL RIGHTS RESERVED.

MMML/MXL GEN RODOLFO SANCHEZ TABOADA INTL **JEPPESEN MEXICALI, MEXICO**
 2 DEC 16 **(13-5)** VOR Rwy 28
 Eff 6 Dec

*ATTIS 127.6	*MEXICALI FIS 123.9	*MEXICALI Approach 118.2	MAZATLAN Center 128.3 when App inop.	*MEXICALI Tower 118.2
VOR MXL 115.0	Final Apch Crs 288°	No FAF	MDA(H) 580' (509')	Appt Elev 74' Rwy 71'
MISSED APCH: Climbing LEFT turn to intercept outbound MXL VOR R-108 and proceed on the approach track to the minimum holding altitude.				
Alt Set: MB (IN on req) Rwy Elev: 3 MB Trans level: FL 195 Trans alt: 18500'				MSA MXL VOR



Gnd speed-Kts	70	90	100	120	140	160	REIL PAPI-L	LT	MXL 115.0 R-108
Descent Angle 3.00°	372	478	531	637	743	849			
MAP at VOR									
STRAIGHT-IN LANDING RWY 28					CIRCLE-TO-LAND				
MDA(H) 580' (509')					MDA(H)				
A	1				Max Kts	580'(506') - 1			
B					90				
C	1 1/2				120	640'(566') - 1 1/2			
D					140				
					165	640'(566') - 2			

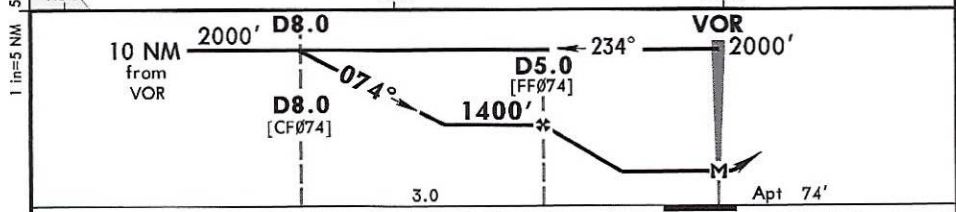
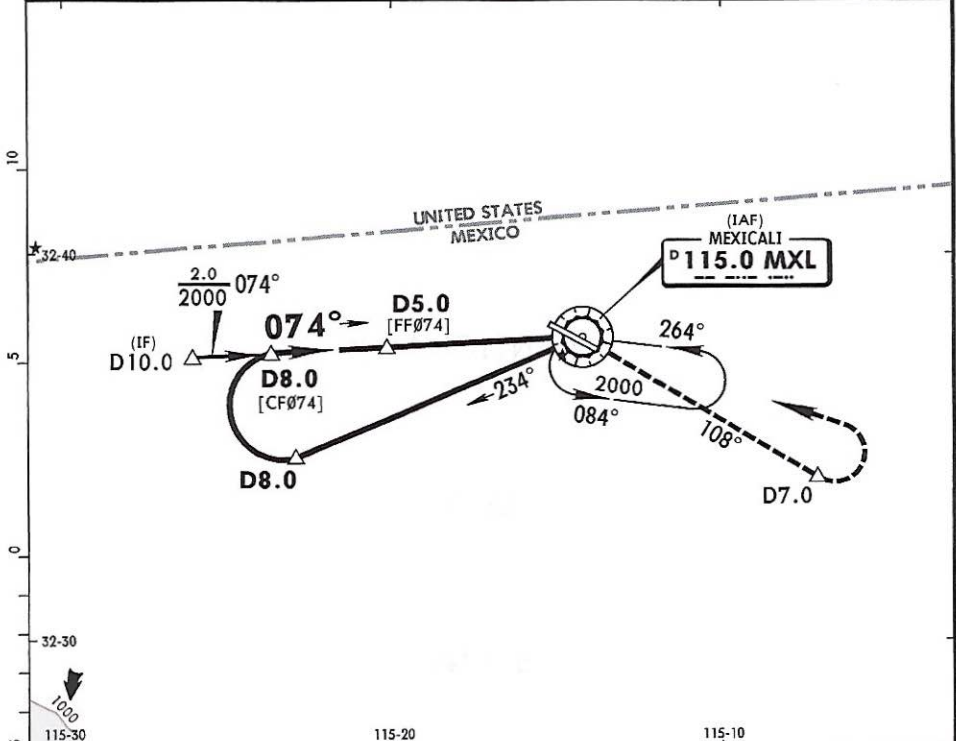
CHANGES: None. © JEPPESEN, 1998, 2016. ALL RIGHTS RESERVED.

MMML/MXL

GEN RODOLFO SANCHEZ TABOADA INTL

JEPPESEN MEXICALI, MEXICO
 20 MAY 16
 Eff 26 May (13-6) VOR DME-A

*ATIS 127.6	*MEXICALI FIS 123.9	*MEXICALI Approach 118.2	MAZATLAN Center 128.3 when App inop.	*MEXICALI Tower 118.2
VOR MXL 115.0	Final Apch Crs 074°	Minimum Alt D5.0 1400' (1326')	MDA(H) Refer to Minimums	Apt Elev 74'
MISSED APCH: Climb on MXL VOR R-108 to D7.0, then turn LEFT within 10 NM to MXL VOR to the minimum holding altitude.				① No MSA Published
Alt Set: MB (IN on req)	Apt Elev: 3 MB	Trans level: FL 195	Trans alt: 18500'	MSA MXL VOR



Lighting - Refer to Airport Chart	↑ on 115.0	MXL R-108	D7.0
CIRCLE-TO-LAND			
Max Kts	MDA(H)		
A 90	580'(506') - 1		
B 120	640'(566') - 1½		
C 140	640'(566') - 2		
D 165			

CHANGES: Rwy elev, procedure altitudes, database identifiers.

© JEPPESEN, 1999, 2016. ALL RIGHTS RESERVED.

52-1187

10

5

0

32-30

5

1 in=5 NM